



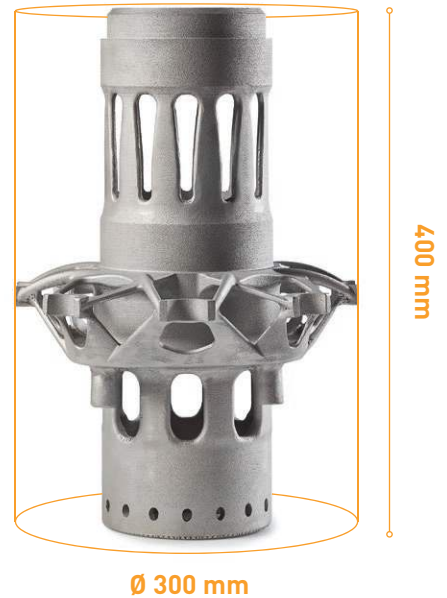
technology at your hand



# 3D additive manufacturing

## MYSINT300

Laser Metal Fusion



# laser

# marking & engraving

## OEM series

marking laser solutions



## class 1 SYSTEMS series

marking-engraving laser solutions



# laser

# welding



## SWA series

moulds maintenance  
laser solutions



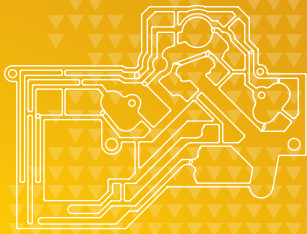
## SWT series

welding & moulds maintenance  
laser solutions

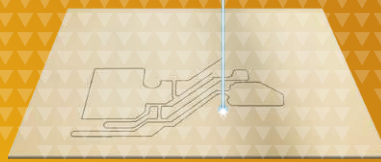


 **sisma**





the project



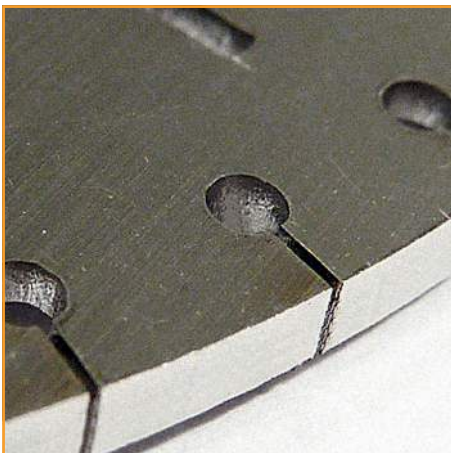
the cutting



the finished product

## BCL

cutting laser



The features, images, performances, weights and measures contained in the catalogue are completely indicative and approximate and may change without notice.

*Le caratteristiche, le immagini, le prestazioni, i pesi e le misure indicate si intendono del tutto indicativi ed approssimativi e possono variare senza preavviso.*

**SISMA S.p.A.**  
via dell'Industria, 1  
36013 Piovene Rocchette (VI) Italy  
tel. (+39) 0445 595511  
fax (+39) 0445 595595  
info@sisma.com  
sisma.com



COMPANY WITH  
QUALITY SYSTEM  
CERTIFIED BY DNV GL  
= ISO 9001 =